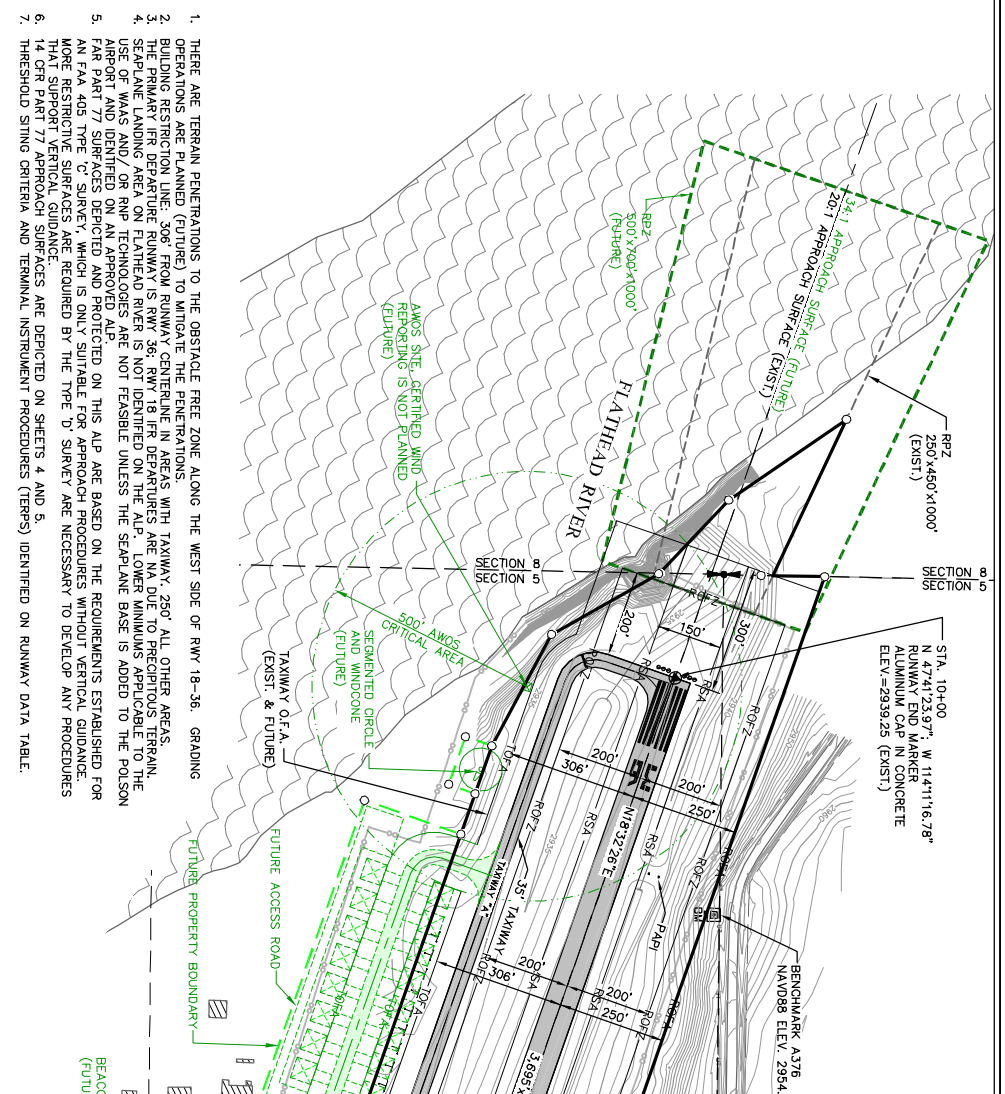
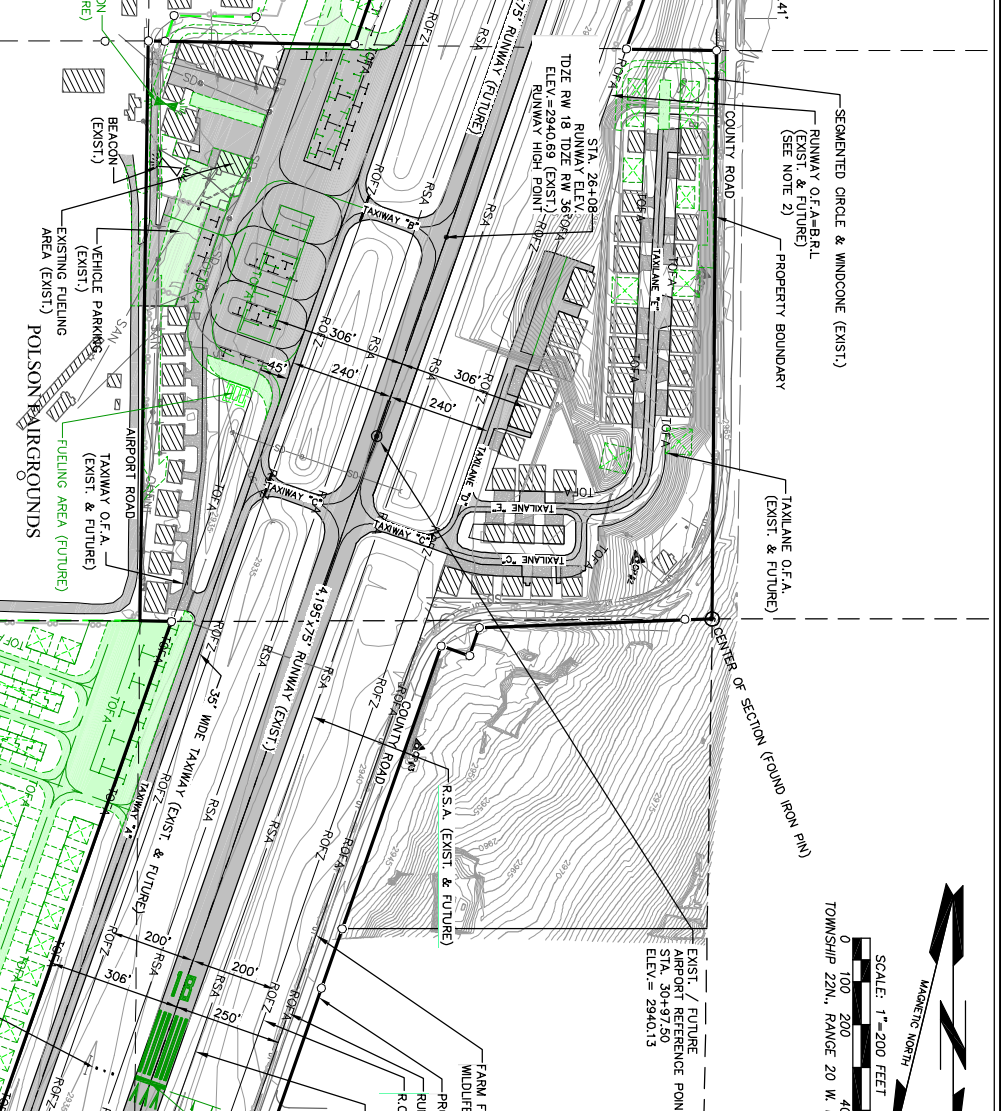
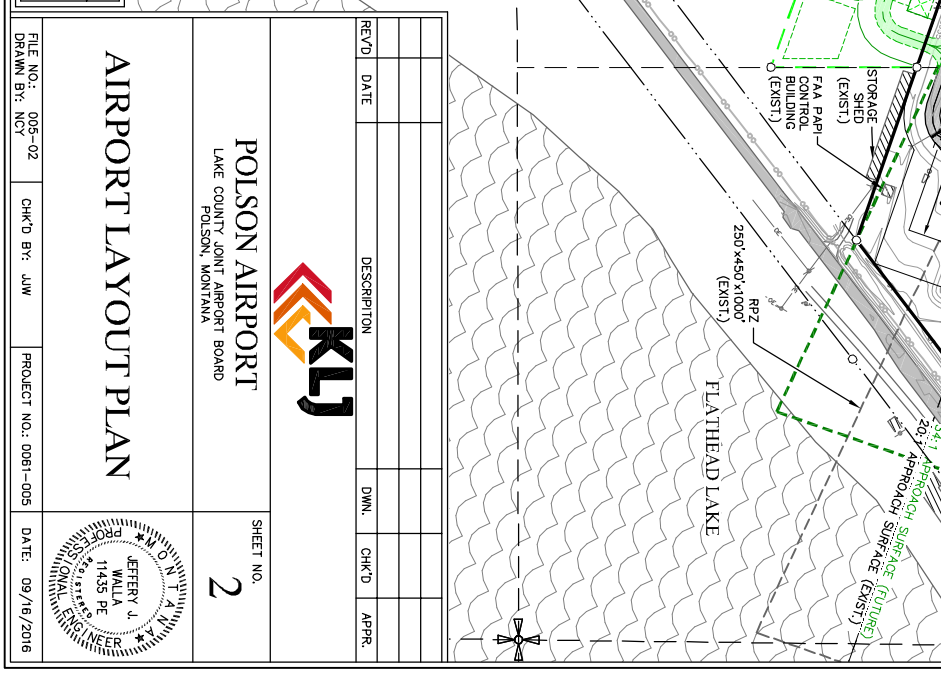


ITEM	EXISTING (E)	FUTURE (F)
RUNWAY DESIGNATION	18	18
RUNWAY DESIGN CODE (IARC)	B-II(1)-5000	B-II(1)-5000
APPROACH REFERENCE CODE (APRC)	B-II	B-II
DEPARTURE REFERENCE CODE (DRRC)	B-II	B-II
RUNWAY DIMENSIONS	4195' x 75'	4195' x 75'
RUNWAY LENGTH CENTERLINE	SMALL (20' P) (95% FLEET)	SMALL (20' P) (95% FLEET)
CRITICAL AIRCRAFT WINGSPIAN	33.5'	33.5'
CRITICAL AIRCRAFT TAIL HEIGHT	8.55'	15'
CRITICAL AIRCRAFT APPROACH SPEED	69 (KTS)	103 (KTS)
MAXIMUM TAKEOFF WEIGHT (MTOW)	2,937.35	2,998.42
MAXIMUM TAKEOFF WEIGHT (MTOW)	3,660 (LBS)	2,500 (LBS)
RUNWAY END ELEVATION (TOZ)	2,940.74'	2,940.74'
TOUCH-DOWN ZONE ELEVATION (TDZ)	2,940.74'	2,940.74'
RUNWAY GRADIENT	0.045%	0.023%
MAX GRADE WITHIN RUNWAY LENGTH (%)	0.210%	0.210%
RUNWAY LIGHTING	MRL	MRL
PAYMENT TYPE	BITUMINOUS	BITUMINOUS
RUNWAY CATEGORY	UTILITY	UTILITY
PAVEMENT STRENGTH (WHEEL LOAD)	12,500 (LBS (SM))	12,500 (LBS (SM))
PAVEMENT MARKINGS	NON-PRECISION	NON-PRECISION
RUNWAY SAFETY AREA (RSA)	4,795' x 150'	4,795' x 150'
RUNWAY OBSTACLE FREE ZONE (OFZ)	4,795' x 300'	4,795' x 300'
RUNWAY OBSTACLE FREE ZONE (OFZ)	4,995' x 400'	4,995' x 400'
14 CFR PART 77 APPROACH TYPE	NON-PRECISION	NON-PRECISION
14 CFR PART 77 APPROACH SLOPE	20:1	20:1
14 CFR PART 77 APPROACH DIMENSIONS	500' X 2,000' X 5,000'	500' X 2,000' X 5,000'
14 CFR PART 77 APPROACH DIMENSIONS	1 MI LE	1 MI LE
THRESHOLD SITING SURFACE (TSS) CATEGORY	4	4
THRESHOLD SITING SURFACE (TSS) SLOPE	20:1	20:1
THRESHOLD SITING SURFACE (TSS) DIMENSIONS	STARTS 200' FROM THRESHOLD, 400' X 3,800' X 10,000'	STARTS 200' FROM THRESHOLD, 400' X 3,800' X 10,000'
DEPARTURE SURFACE DIMENSIONS	40:1	40:1
DEPARTURE SURFACE DIMENSIONS	1,000' X 6,466' X 10,200'	1,000' X 6,466' X 10,200'
DEPARTURE SURFACE DIMENSIONS	198.54'	198.54'
RUNWAY ORIENTATION (TRUE)	13.65° E	13.65° E
RUNWAY ORIENTATION (MAGNETIC)	13.65° E	13.65° E
RUNWAY ORIENTATION (MAGNETIC)	13.65° E	13.65° E
RUNWAY ORIENTATION (MAGNETIC)	13.65° E	13.65° E
DISPLACED THRESHOLD	NONE	NONE
TAKEOFF RUNWAY AVAILABLE (TORA)	4,195'	4,195'
TAKEOFF RUNWAY AVAILABLE (TORA)	4,195'	4,195'
ACCELERATED STOP DISTANCE AVAILABLE (ASDA)	4,195'	4,195'
LANDING DISTANCE AVAILABLE (LDA)	250' X 450' X 1,000'	250' X 450' X 1,000'
822 DIMENSIONS - APPROACH	250' X 450' X 1,000'	250' X 450' X 1,000'
822 DIMENSIONS - DEPARTURE	250' X 450' X 1,000'	250' X 450' X 1,000'



ITEM	EXISTING	FUTURE
AIRPORT ELEVATION (NAVD 88)	2940.69'	SAME
APP-LATITUDE (NAD 1983)	N 47° 41' 43.594"	Ⓟ SAME
APP-LONGITUDE (NAD 1983)	W 114° 11' 07.033"	Ⓟ SAME
END RUNWAY 18-LATITUDE	N 47° 42' 02.219"	Ⓟ SAME
END RUNWAY 18-LONGITUDE	W 114° 10' 57.283"	Ⓟ W 114° 10' 59.606"
END RUNWAY 36-LATITUDE	N 47° 41' 23.971"	Ⓟ SAME
END RUNWAY 36-LONGITUDE	W 114° 11' 16.780"	Ⓟ SAME
END RUNWAY ZONE ELEV.-R/W 18 (NAVD 88)	2837.35	SAME
END RUNWAY ZONE ELEV.-R/W 36 (NAVD 88)	2839.25	SAME
TOUCH DOWN ZONE ELEV.-R/W 18 (NAVD 88)	2839.25	SAME
TOUCH DOWN ZONE ELEV.-R/W 36 (NAVD 88)	2839.25	SAME
MEAN MAX. TEMP. - HOTTEST MONTH	82.2°	SAME
WIND INDICATION	100 L, E, I, A	SAME
WIND CONES (TWD)	100 L, E, I, A	SAME
TEL FACILITY	YES	SAME
GENERATION	YES	SAME
GENERATION	YES	SAME
AIRPORT REFERENCE CODE	B-II	Ⓟ SAME
AIRPORT REFERENCE CODE	B-II	Ⓟ SAME
MAGNETIC VARIATION	151.9' E (2005)	070' W /YEAR



ITEM	EXISTING	FUTURE
SIXTEENTH SECTION-LINE	---	---
QUARTER SECTION-LINE	---	---
SECTION-LINE	---	---
PROPERTY BOUNDARY	---	---
BUILDING RESTRICTION LINE	---	---
RUNWAY CENTERLINE	---	---
OBJECT FREE AREA	---	---
OBSTACLE FREE ZONE	---	---
RUNWAY SAFETY AREA	---	---
RUNWAY PROTECTION ZONE	---	---
DITCH / DRAINAGE	---	---
FENCE	---	---
BUILDINGS	---	---
BITUMINOUS SURFACE	---	---
BEACON	---	---
G.P.S. MONUMENT	---	---
G.P.S. REFERENCE MONUMENT	---	---
THRESHOLD LIGHTS	---	---
AIRPORT REFERENCE POINT	---	---